



Digital Receipt

This receipt acknowledges that **Turnitin** received your paper. Below you will find the receipt information regarding your submission.

The first page of your submissions is displayed below.

Submission author: Ni Putu Pandawani
Assignment title: Article and Proceeding
Submission title: High impact of *Clerodendrum paniculatum* leaf extract to su...
File name: LISH-PDF-30_MEI_2022-11097-Article_Text-1053553-1-9-2022...
File size: 358.52K
Page count: 6
Word count: 4,703
Character count: 25,128
Submission date: 31-May-2022 06:57PM (UTC+0700)
Submission ID: 1847769977

BIODIVERSITAS
Volume 23, Number 6, June 2022
Pages: 2914-2919
ISSN: 1412-031X
E-ISSN: 2085-4722
DOI: 10.13057/biodiv0230618

High impact of *Clerodendrum paniculatum* leaf extract to suppress zucchini yellow mosaic virus infection in zucchini plants

NI PUTU PANDAWANI^{1*}, LISTIHANI LISTIHANI², I KETUT WIDNYANA³, PUTU EKA PASMIDIARIATI⁴,
DEWA GEDE WIRYANGGA SELANGA⁵

¹Program of Agrotechnology, Faculty of Agriculture and Business, Universitas Mahasarawati, Jl. Kumbaja No.11A, Dangin Puri Kangin, Denpasar 80231, Bali, Indonesia. Tel./fax: +62-361-227019, *email: pandawani@mahasarawati.ac.id

²Program of Agrotechnology, Faculty of Agriculture, Universitas Widyadarmas, Jl. Terompong No. 24, Sametia Kelod, Denpasar 80239, Bali, Indonesia

Manuscript received: 2 May 2022; Revision accepted: 23 May 2022.

Abstract. Pandawani NP, Listihani L, Widnyana IK, Aris P, Selanga DGW. 2022. High impact of *Clerodendrum paniculatum* leaf extract to suppress zucchini yellow mosaic virus infection in zucchini plants. *Biodiversitas* 23: 2914-2919. Zucchini yellow mosaic virus (ZYMV) is an important virus in zucchini plants (*Cucurbita pepo* L.). ZYMV infection is prevalent in *C. pepo* in Bali and is extremely difficult to eradicate. This study aimed to determine the efficacy of papaya leaf extract (*Clerodendrum paniculatum* L.) in reducing yield loss in *C. pepo*. A factorial randomized block design with two variables was employed in this study. The application time of the *C. paniculatum* extract was the first variable, and concentration was the second. Plant extract was applied during seed immersion, one day before and after inoculation, and on the same day of virus inoculation. The concentrations of *C. paniculatum* extract employed were 10%, 30%, and 50%. The crude extract was sprayed onto the *C. pepo* leaves. Plants treated with extract one day after virus inoculation at 10%, 30%, and 50% concentrations exhibited yellowing, yellowing with cupping, mosaic, mosaic with cupping, and cupping. While application of extract one day before virus inoculation at 30% and 50% concentrations resulted in yellowing and yellowing with cupping signs. Plants infected with ZYMV first showed flowering at 77 DAP, whereas plants treated with *C. paniculatum* leaf extract one day before virus inoculation started flowering at 32 DAP. Application of *C. paniculatum* leaf extract one day before ZYMV inoculation on *C. pepo* effectively suppressed 40% yield loss. The findings of present investigation revealed information about the potential of *C. paniculatum* leaf extract as a plant virus control agent through the mechanism of infection in *C. pepo*.

Keywords: Flowering, papaya leaf extract, yield loss, zucchini, Zucchini yellow mosaic virus (ZYMV)

INTRODUCTION

ZYMV is one of the most critical viruses causing mosaic disease in Cucurbitaceae plants worldwide, which could cause yield reduction (Simmons et al. 2011; Simmons et al. 2013). The incidence of viral disease due to ZYMV infection in cucumber plants could reach 100%, with varying attack intensities (Tymchyshyn et al. 2017). The loss due to viral infection depends on the time of infection and can result in yield losses of up to 100% (Couts et al. 2011). Plants become very susceptible to viral infection at young age, affecting the high incidence of disease. When young plants become infected, the incubation period of virus is shorter, and the virus distribution and translocation process is accelerated (Couts et al. 2013). Host range is one way of determining the biological nature of a virus (Spadotti et al. 2015). The most frequently employed host range test plants for ZYMV are *Gomphrena globosa* L., *Chenopodium amaranticolor* Cooke et Reyn., *C. quinoa* L., *Citrullus lanatus*, *Cucumis melo* L., *Cucumis sativus* L., *Luffa acutangula*, *Momordica charantia*, *Sesuvium edule*, *Phaseolus vulgaris* L., *Vigna sinensis*, *Capsicum annuum*, *Daucus striatum*, *Lycopersicon esculentum*, *Nicotiana glauca* L. cv. White barley, *N. benthamiana*, and *Physalis floridana* (Januszewska et al. 2013; Massimo et al. 2013; Spadotti et al. 2015).

Zucchini yellow mosaic virus (ZYMV) has a one-molecule positive sense RNA genome of approximately 10 kb and encodes a poly-protein that is proteolytically processed into mature proteins: P1 (protease), HC (helper component/protease), P3, 6K1, CI (cylinder inclusion), 6K2, N1a (nuclear inclusion a), VPg (viral protein associated genome), N1b (nuclear inclusion b) and CP (Gall-On 2007; Moradi et al. 2019). Until now, four out of ten potyviral proteins have been identified in ZYMV-infected plants, namely P1, HC-Pro, cylindrical inclusions, cylindrical inclusions (CI) pinwheel type 1, and CP (Valli et al. 2017; Maghames et al. 2018). Other proteins (Third protein (P3), 6K1, 6K2, viral genome-linked protein (VPg), Nuclear inclusion A (N1a), and N1b replicase) have not been identified in ZYMV-infected plants and are based on potyvirus sequence homology.

ZYMV was first reported in Italy in 1973 (Liu et al. 1981) and then France (Lecoq et al. 1981). ZYMV distribution has been found in Africa, America, Asia, Europe, the Middle East, and Oceania (Spadotti et al. 2015; Bubici et al. 2020). In Egypt, ZYMV has been associated with significant yield losses in many cucurbit crops, including cucumbers, melons, pumpkins, marrow vegetables, watermelons, and especially zucchini (*Cucurbita pepo* L.) (Alem et al. 2021). ZYMV infection result in symptoms, such as mosaicism, yellowing, and eventually "shooping" on the leaves. The fruit is stunted,

High impact of Clerodendrum paniculatum leaf extract to suppress zucchini yellow mosaic virus infection in zucchini plants

by Ni Putu Pandawani

Submission date: 31-May-2022 06:57PM (UTC+0700)

Submission ID: 1847769977

File name: LISH-PDF-30_MEI_2022-11097-Article_Text-1053553-1-9-20220530.pdf (358.52K)

Word count: 4703

Character count: 25128

High impact of *Clerodendrum paniculatum* leaf extract to suppress zucchini yellow mosaic virus infection in zucchini plants

NI PUTU PANDAWANI^{1,*}, LISTIHANI LISTIHANI¹, I KETUT WIDNYANA¹, PUTU EKA PASMIDI ARIATI¹, DEWA GEDE WIRYANGGA SELANGGA²

¹Program of Agrotechnology, Faculty of Agriculture and Business, Universitas Mahasaraswati. Jl. Kamboja No.11A, Dangin Puri Kangin, Denpasar 80233, Bali, Indonesia. Tel./fax.: +62- 361-227019, *email: pandawaniputu@unmas.ac.id

²Program of Agrotechnology, Faculty of Agriculture, Universitas Warmadewa. Jl. Terompong No. 24, Sumerta Kelod, Denpasar 80239, Bali, Indonesia

Manuscript received: 2 May 2022. Revision accepted: 23 May 2022.

Abstract. Pandawa NP, Listihani L, Widnyana IK, Ariati PEP, Selangga DGW. 2022. High impact of *Clerodendrum paniculatum* leaf extract to suppress zucchini yellow mosaic virus infection in zucchini plants. *Biodiversitas* 23: 2914-2919. Zucchini yellow mosaic virus (ZYMV) is an important virus in zucchini plants (*Cucurbita pepo* L.). ZYMV infection is prevalent in *C. pepo* in Bali and is extremely difficult to eradicate. This study aimed to determine the efficacy of pagoda leaf extract (*Clerodendrum paniculatum* L.) in reducing yield loss in *C. pepo*. A factorial randomized block design with two variables was employed in this study. The application time of the *C. paniculatum* extract was the first variable, and concentration was the second. Plant extract was applied during seed immersion, one day before and after inoculation, and on the same day of virus inoculation. The concentrations of *C. paniculatum* extract employed were 10%, 30%, and 50%. The crude extract was sprayed onto the *C. pepo* leaves. Plants treated with extract one day after virus inoculation at 10%, 30%, and 50% concentrations exhibited yellowing, yellowing with cupping, mosaic, mosaic with cupping, and stunting. While application of extract one day before virus inoculation at 30% and 50% concentrations resulted in yellowing and yellowing with cupping signs. Plants infected with ZYMV first showed flowering at 37 DAP, whereas plants treated with *C. paniculatum* leaf extract one day before virus inoculation started flowering at 32 DAP. Application of *C. paniculatum* leaf extract one day before ZYMV inoculation on *C. pepo* effectively suppressed 40% yield loss. The findings of present investigation revealed information about the potential of *C. paniculatum* leaf extract as a plant virus control agent through the mechanism of induction in *C. pepo*.

Keywords: Flowering, pagoda leaf extract, yield loss, zucchini, Zucchini yellow mosaic virus (ZYMV)

INTRODUCTION

ZYMV is one of the most critical viruses causing mosaic disease in Cucurbitaceae plants worldwide, which could cause yield reduction (Simmons et al. 2011; Simmons et al. 2013). The incidence of viral disease due to ZYMV infection in cucumber plants could reach 100%, with varying attack intensities (Tymchysh et al. 2017). The loss due to viral infection depends on the time of infection and can result in yield losses of up to 100% (Coutts et al. 2011). Plants become very susceptible to viral infection at young age, affecting the high incidence of disease. When young plants become infected, the incubation period of virus is shorter, and the virus distribution and translocation process is accelerated (Coutts et al. 2013). Host range is one way of determining the biological nature of a virus (Spadotti et al. 2015). The most frequently employed host range test plants for ZYMV are *Gomphrena globosa* L., *Chenopodium amaranticolor* Coste et Reyn., *C. quinoa* L., *Citrullus lanatus*, *Cucumis melo* L., *Cucumis sativus* L., *Luffa acutangula*, *Momordica charantia*, *Sechium edule*, *Phaseolus vulgaris* L., *Vigna sinensis*, *Capsicum annuum*, *Datura stramonium*, *Lycopersicon esculentum*, *Nicotiana tabacum* L. cv. White barley, *N. benthamiana*, and *Phytolacca floridana* (Jaroszewska et al. 2013; Massumi et al. 2013; Spadotti et al. 2015).

Zucchini yellow mosaic virus (ZYMV) has a 10 kb molecule positive sense RNA genome of approximately 10 kb and encodes a poly-protein that is proteolytically processed into mature protein; P1 (protease), HC (helper component/protease), P3, 6K1, CI (cylinder inclusion), 6K2, NIa (nuclear inclusion a), VPg (viral protein-associated genome), NIb (nuclear inclusion b) and C4 (Gal-On 2007; Moradi et al. 2019). Until now, four out of ten potyviral proteins have been identified in ZYMV-infected plants, namely P1, HC-Pro, cylindrical inclusions, cylindrical inclusions (CI) pinwheel type 1, and CP (Valli et al. 2017; Maghamia et al. 2018). Other proteins (Third protein (P3), 6K1, 6K2, viral genome-linked protein (VPg), Nuclear Inclusion A (NIa), and NIb replicas) have not been identified in ZYMV-infected plants and are based on potyvirus sequence homology.

ZYMV was first reported in Italy in 1973 (Lisa et al. 1981) and then France (Lecollet et al. 1981). ZYMV distribution has been found in Africa, America, Asia, Europe, the Middle East, and Oceania (Spadotti et al. 2015; Bubici et al. 2020). In Egypt, ZYMV has been associated with significant yield losses in many cucurbit crops, including cucumbers, melons, pumpkins, marrow vegetables, watermelons, and especially zucchini (*Cucurbita pepo* L.) (Aleem et al. 2021). ZYMV infection result in symptoms, such as mosaicism, yellowing, and eventually "shoeing" on the leaves. The fruit is stunted,

twisted, and distorted, resulting in reduced yield and inability to market the product, especially chayote zucchini (Massumi et al. 2011). ZYMV is commonly transferred in two ways: horizontally via aphid vectors and vertically by transmission from the first generation of ZYMV-infected seeds to the following generation of ZYMV-infected seeds (Simmons et al. 2011; Wang and Li 2017). Several species of aphids are ZYMV vectors that transmit viruses non-persistently, such as *A. gossypii*, *Myzus persicae* (Maina et al. 2017; Rorzy et al. 2014), *Acyrtosiphon pisum*, *Acyrtosiphon kondoi*, *Aphis craccivora*, *Aphis citricola*, *Aphis middletonii*, *Aphis spiraeicola*, *Macrosiphum euphorbiae*, *Toxoptera aurantii*, and *Uroleucon ambrosiae* (Spadotti et al. 2015). ZYMV can also be transmitted mechanically easily through cut tools that have been contaminated with the virus (Nasr-Eldin et al. 2016; Prendeville et al. 2012).

Viral diseases can be controlled by eradicating insect vectors, quarantining, and planting healthy and virus-free seeds. Additionally, the usage of antiviral compounds derived from plant extracts has been proven to be effective against a variety of viruses due to their ribosome-inactivating proteins (RIPs) (Gal-On 2007). One of the agents capable of inducing systemic resistance in plants is a plant extract (Elbeshehy 2017). The effective control of viral diseases is the use of resistant varieties, but there are not many commercial virus-resistant cultivars available.

Systemic resistance of a plant can be activated by inducing resistance genes present in plants by utilizing resistance-inducing agents (Elbeshehy 2017). One of the agents that induce systemic resistance of plants is plant extracts (Gal-On 2007). Spinach leaf extract (*Amaranthus spinosus*), four o'clock flower leaf (*Mirabilis jalapa*), and pagoda leaf (*Clerodendrum paniculatum* L.) were reported to induce systemic resistance to anthracnose and CMV pathogens in chili (Hersanti 2003). Other plant extract such as *Chenopodium amaranticolor* is reported to have antiviral activity for the tobacco mosaic virus (TMV) and antitumor for Ehrlich tumor (EA) (De Oliveira et al. 1993). Extracts of *C. paniculatum* leaf, thorn spinach, four o'clock flower, *C. amaranticolor*, and sambiloto are able to suppress BCMV infection in yardlong bean plants (Kurnianingsih and Damayanti 2012).

The utilization of efficacious plant extracts have been used to benefit human health, but are still of little use in plant protection. Therefore, it is necessary to explore potential plant species to control pathogens, including viruses. The objective of this study was to test the effectiveness of plant extract to suppress ZYMV.

MATERIALS AND METHODS

Preparation of zucchini plant (*Cucurbita pepo* L.)

The seeds of the Carisa cultivar *C. pepo* were sown on plastic composite trays containing sterile growth media of a mixture of soil and compost. After 15 days, the grown seedlings were transplanted into plastic pots measuring 35 cm × 30 cm containing 5 kg of sterile planting medium, i.e. soil and manure (2:1 ratio). Each pot was planted with

three seeds, and after one week of growth, one healthy plant was selected for the research object. Plants were irrigated daily with appropriate volume.

Propagation of ZYMV inoculum

The ZYMV inoculum was obtained from the Laboratory of the Faculty of Agriculture, Mahasarakswati University in Denpasar, then confirmed its nucleic acid sequence via DNA sequencing and designated it as ZYMV-zucchini isolate Bali (Pandawani and Widnyana 2021) (Figure 1). The inoculum was propagated mechanically by inoculating ZYMV inoculum on *C. pepo* two weeks after planting. Mechanical transmission of ZYMV was carried out by grinding sick leaves (source of inoculum) in phosphate buffer pH 7 with a ratio of 1:10 (w/v). The sap was then applied to the leaves of healthy plants which were treated with 600 mesh carborundum. After inoculation, leaves were rinsed with running water. The plants were then reared in a greenhouse, and symptomatic young leaves were used as a source of inoculum in this study.

Preparation and application of *Clerodendrum paniculatum* extract

The leaves of *C. paniculatum* was obtained from the area around Baturiti, Tabanan, Bali, Indonesia. *C. paniculatum* extract was prepared through a drying process to obtain a simplicia form. The simplicia was then macerated to produce a concentrated leaf extract with a concentration of 100% (Verma et al. 1998). Application of *C. paniculatum* extract to *C. pepo* was carried out according to the application time determined with a volume of 100 mL per plant. The *C. paniculatum* extract was applied on *C. pepo* leaves after three weeks of transplanting.

Inoculation of ZYMV in zucchini plants (*Cucurbita pepo* L.)

Three-week-old *C. pepo* were mechanically inoculated with ZYMV. Virus inoculum was prepared by grinding symptomatic young leaves of *C. pepo* plant (source of ZYMV inoculum) in 1:10 (w/v) phosphate buffer. The virus was inoculated by applying the inoculum on the first leaf of *C. pepo* plant, which was sprinkled with 600 mesh carborundum.

Experiment design and data analysis

This study was conducted in a completely randomized design with a factorial pattern. The first factor was the time of application of the inducer extract, which consisted of five treatments, namely: (i) application of *C. paniculatum* extract during seed soaking (T1), (ii) application time of *C. paniculatum* extract one day before inoculation of ZYMV sap (T2), (iii) application of *C. paniculatum* extract on the same day as ZYMV applied (T3), (iv) application of *C. paniculatum* extract one day after ZYMV (T4), and no application of *C. paniculatum* extract (T0) (control).



Figure 1. Inoculum source of ZYMV isolates Bali on zucchini plants

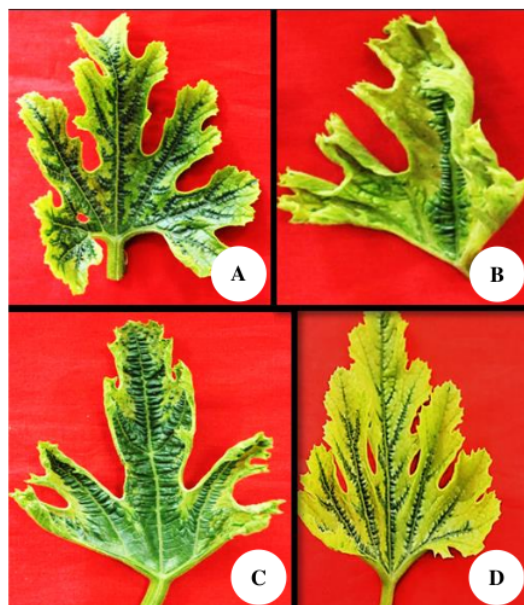


Figure 2. Disease symptoms of ZYMV isolates Bali on zucchini plants: A. mosaic, B. yellowing with cupping, C. mosaic with cupping, and D. Yellowing

The second factor was the concentration of inducer extract, which consisted three treatments, namely: (i) 10% of *C. paniculatum* extract (C1), (ii) 30% of *C. paniculatum* extract (C2), and (iii) 50% of *C. paniculatum* extract (C3). The treatments were combined to obtain (5 × 3) 15 combination treatments, and each combination treatment was repeated ten times to obtain 45 experimental units. Observation parameters included disease incidence, type of disease symptoms, disease severity, virus concentration, and loss of fruit yield. Data were analyzed using ANOVA according to a completely randomized design with factorial pattern (5 × 3 × 10) with Duncan's follow-up test (DMRT) at 5% level.

24

Enzyme-linked immunosorbent assays (ELISA)

The detection of ZYMV virus was performed on the leaves of *C. pepo* plant four weeks after inoculation. Serological virus detection was carried out by enzyme-linked immunosorbent assay (ELISA) using Potyvirus antiserum (DSMZ). Virus accumulation was quantitatively read using ELISA Reader model 550 (Bio-Rad, USA) at a wavelength of 405 nm.

RESULTS AND DISCUSSION

Incubation period

The incubation period of ZYMV in plants treated with *C. paniculatum* leaf extract was the most prolonged average incubation period (18.27 DAP) compared to the treatment without *C. paniculatum* leaf extract (C+) (3.60 DAP). Both factors (inoculation time and concentration of *C. paniculatum* leaf extract) exhibited a significantly longer incubation period when compared with the control treatment. The application of 50% *C. paniculatum* leaf extract one day before virus inoculation significantly slowed the incubation period of virus (21.00 DAP) compared with other treatments (Table 1). Kurnianingsih and Damayanti (2012) found that *C. paniculatum* leaf extract could slow the incubation period of BCMV in yardlong beans.

Symptoms of infection

ZYMV inoculation produced various symptoms, such as yellowing, yellowing with cupping, mosaic, mosaic with cupping, and stunting (Figure 2 and Table 1). Plants treated with leaf extract one day after virus inoculation at concentrations of 10%, 30%, and 50% showed symptoms of yellowing, yellowing with cupping, mosaic, mosaic with cupping, and stunting. The application of extract one day before inoculation of viral sap at concentrations of 30% and 50% only produced yellowing and yellowing with cupping symptoms.

Disease incidence

Plants treated with *C. paniculatum* leaf extract one day before sap virus inoculation showed the lowest (20%) disease incidence until the end of observation. The other treatments resulted in 40% - 60% disease prevalence. In control plants where no *C. paniculatum* leaf extract was applied, disease incidence reached 100% (Table 4).

Disease severity

Clerodendrum paniculatum extract treatment significantly reduced the severity of disease. Among the treatments, the highest disease severity was recorded in extract application treatment one day after inoculation of viral smear. In comparison, the lowest was observed in the application of extract one day before the inoculation of virus (Table 2). The best time for application of *C. paniculatum* leaf extract was one day before ZYMV inoculation with a concentration of 50% because it could reduce disease severity up to 60.79% (Table 4). It was observed that *C. paniculatum* leaf extract suppressed the

³¹ disease incidence and severity of ZYMV infection. This is in accordance with Damayanti and Pebriyeni (2015), Kurnianingsih and Damayanti (2012), who reported that *C. paniculatum* leaf extract can suppress BCMV infection reaching 100% in yardlong beans.

Virus detection with ELISA

ELISA absorbance value (NAE) showed that no virus was detected in the samples given *C. paniculatum* leaf

extract at a concentration of ²³% and 50% one day before virus inoculation. NAE was not significantly different from the negative control (Table 4). Based on ELISA test, *C. pepo* showed presence (positive) of ZYMV in all treatments, except one day before virus sap inoculation with a concentration of 30 and 50%, *C. pepo* showed absence (negative) of ZYMV.

Table 1. Incubation period in ZYMV-infected zucchini plants in response to differences in application time and concentration of *Clerodendrum paniculatum* leaf extract

<i>C. paniculatum</i> leaf extract concentration (%)	Incubation period of ZYMV infection (DAP)					Average effect of extract concentration
	No extract application (Positive control, C+)	Extract application during seed soaking	Extract application one day before virus sap inoculation	Extract application concurrently with viral sap inoculation	Extract application one day after viral sap inoculation	
10	3.40 a	14.0 e	16.00 fg	6.20 b	6.00 b	9.12 a
30	3.60 a	15.2 f	17.80 h	8.60 d	7.20 c	10.48 b
50	3.80 a	16.8 g	21.00 i	9.40 d	8.40 d	11.88 c
Average	3.60 a	⁷ 15.33 d	18.27 e	8.07 c	7.20 b	

Note: day after planting (DAP); Different letters in the same row show a significant effect compared to the positive control (C+)

Table 2. Disease severity in ZYMV-infected zucchini plants in response to differences in application time and concentration of *Clerodendrum paniculatum* leaf extract

<i>C. paniculatum</i> leaf extract concentration (%)	Disease severity (%)					Average effect of extract concentration
	No extract application (Positive control, C+)	Extract application during seed soaking	Extract application one day before virus sap inoculation	Extract application concurrently with viral sap inoculation	Extract application one day after viral sap inoculation	
10	66.37 j	39.96 e	31.80 bc	51.42 g	61.93 hij	50.30 c
30	64.30 ij	37.01 cd	27.33 ab	49.71 fg	58.78 hi	47.43 b
50	62.59 j	32.87 bc	23.59 a	45.14 ef	56.88 h	44.21 a
⁷ Average	64.42 e	36.61 b	27.57 a	48.76 c	59.19 d	

Note: Different letters in the same row show a significant effect compared to the positive control (C+)

Table 3. Flowering in zucchini plants in response to differences in application time and concentration of *Clerodendrum paniculatum* leaf extract

<i>C. paniculatum</i> leaf extract concentration (%)	Appearance of flower (DAP)					Average effect of extract concentration
	No extract application (Positive control, C+)	Extract application during seed soaking	Extract application one day before virus sap inoculation	Extract application concurrently with viral sap inoculation	Extract application one day after viral sap inoculation	
10	37.00 f	33.60 bcd	32.80 b	35.80 e	36.80 f	35.20 b
30	37.20 f	32.60 b	33.80 bcd	33.20 bc	37.40 f	34.84 b
50	36.80 f	33.40 bc	30.80 a	34.60 cd	35.00 de	34.12 a
Average	37.00 c	⁷ 33.20 a	32.47 a	34.53 b	36.40 c	

Note: day after planting (DAP); Different letters in the same row show a significant effect compared to the positive control (C+)

Table 4. Effect of application time and concentration of *Clerodendrum paniculatum* leaf extract on disease incidence, type of symptoms, suppression of ZYMV disease severity, and yield loss

Application time of <i>C. paniculatum</i> leaf extract	Extract concentration (%)	Disease incidence (%)	Type of disease symptom*	Disease severity suppression (%)	ELISA results		Yield loss (%)
					Average of NAE**	Reaction	
C+	10	100 (10/10)	M, Mc, St	-	0.418	+	58.42
	30	100 (10/10)	M, Mc, St	-	0.43	+	55.90
	50	60 (6/10)	Y, Yc, M	-	0.395	+	55.29
Extract application during seed soaking	10	60 (6/10)	M, Mc, St	39.77	0.557	+	35.56
	30	40 (4/10)	Y, Yc, Mc, St	42.58	0.486	+	33.69
	50	40 (4/10)	Y, Yc Mc, St	47.70	0.458	+	37.41
Extract application one day before virus sap inoculation	10	40 (4/10)	Y, Yc	52.04	0.426	+	23.50
	30	20 (2/10)	Y, Yc	58.99	0.184	-	22.18
	50	20 (2/10)	Y, Yc	60.79	0.112	-	19.99
Extract application concurrently with viral sap inoculation	10	60 (6/10)	M, Mc, St	22.57	0.608	+	55.31
	30	40 (4/10)	M	23.25	0.515	+	40.74
	50	40 (4/10)	Y, Yc	26.96	0.489	+	43.93
Extract application one day after viral sap inoculation	10	60 (6/10)	Y, Yc, M, Mc, St	6.68	0.638	+	55.44
	30	60 (6/10)	M	8.96	0.588	+	55.19
	50	40 (4/10)	M	8.90	0.550	+	54.63

Note: C+ (without extract application). Type of disease symptom*: Y = yellowing, Yc = yellowing with cupping, M = mosaic, Mc = mosaic with cupping, St = stunting. Negative control: healthy plants (without virus inoculation and extract application). Positive control: sick plants (virus inoculation and without extract application). **NAE: Elisa Absorbance value

Flowering and yield loss

Infection with ZYMV inhibits flowering in *C. pepo*. ZYMV-infected plants showed reduced flowering and yield loss in *C. pepo* (Kheder et al. 2017; Kone et al. 2017; Maghamnia et al. 2018; Maina et al. 2017). Plants infected with ZYMV first flowered at 37 DAP, while plants treated with *C. paniculatum* leaf extract one day before virus inoculation was flowered at 32 DAP (Table 3). Treatment of *C. paniculatum* leaf extract one day before virus inoculation on *C. pepo* resulted in a yield loss of 19.99% - 23.50% compared with other treatments. This indicated that applying *C. paniculatum* leaf extracts one day before ZYMV inoculation on *C. pepo* effectively reduced yield loss by 40%. Application of *C. paniculatum* leaf extract one day before virus inoculation increased the resistance of *C. pepo*. The low severity and virus accumulation in this treatment indicated the potential of the *C. paniculatum* leaf as an inducer of systemic resistance of *C. pepo*. The mechanism of induction of systemic resistance of *C. pepo* by *C. paniculatum* leaf extract has been reported by Verma et al. (1998). The active compound in the form of 34 kDa protein in *C. paniculatum* flower leaf extract causes tobacco leaves to become immune to viruses. In addition, *C. paniculatum* flower leaf extract can suppress BCMV because it contains virus inhibitors and has antiviral activity (De Oliveira et al. 1993). The active compounds of *C. paniculatum* flower are known as antiviral proteins and are known as ribosome-inactivating proteins (RIPs). RIPs are also present in the root and leaf extract of *M. jalapa* and are referred to as Mirabilis antiviral protein (MAP) (Verma et al. 1998). MAP can reach the ribosome's active site earlier than the virus to prevent viral infection at an early stage before the virus undergoes encapsidation (Vivanco et al. 1999).

In the present study *C. paniculatum* leaf extract showed 80% effectiveness in inhibiting ZYMV infection, whereas against BCMV and CMV, inhibition was observed to be 100% and 82.6%, respectively (Hersanti 2003; Kurnianingsih and Damayanti 2012). It indicates that the same plant extract showed different effectiveness against different viruses.

Application of *C. paniculatum* leaf extract one day before ZYMV inoculation with a concentration of 50% was able to reduce disease incidence and severity of *C. pepo* flowering, and reduce yield loss of *C. pepo* fruit compared to the control treatment. The results of this study enrich the information about the potential of *C. paniculatum* leaves as agent to control plant viruses.

ACKNOWLEDGEMENTS

Acknowledgments are conveyed to the farmer groups in Banjar Sandan Village, Baturiti, Tabanan, Bali for their assistance and support.

REFERENCES

- Aleem EEA, Rabie M, Fattouh FA. 2021. Molecular characterisation of zucchini yellow mosaic virus infecting *Cucurbita pepo* in Egypt. Plant Prot Sci 57 (4): 263-270. DOI: 10.17221/191/2020-PPS.
- Bubici G, Navarro B, Carluccio AV, Ciuffo M, Serio FD, Fabrizio Cillo F. 2020. Genomic sequence variability of an Italian zucchini yellow mosaic virus isolate. Eur J Plant Pathol 156: 325-332. DOI: 10.1007/s10658-019-01886-w.
- Coutts BA, Kehoe MA, Jones RAC. 2011. Minimising losses caused by zucchini yellow mosaic virus in vegetable cucurbit crops in tropical, subtropical and Mediterranean environments through

- cultural methods and host resistance. *Virus Res* 159 (2): 141-160. DOI: 10.1016/j.virusres.2011.04.015.
- Coutts BA, Kehoe MAA, Jones RA. 2013. Zucchini yellow mosaic virus: Contact transmission, stability on surfaces, and inactivation with disinfectants. *Plant Dis* 97 (6): 765-771. DOI: 10.1094/PDIS-08-12-0769-RE.
- Damayanti TA, Pebriyeni L. 2015. Barrier crop and pagoda leaf extract to control Bean common mosaic virus on yard long bean in the field. *J Hort* 25: 238-245. DOI: 10.21082/jhort.v25n3.2015.p238-245.
- De Oliveira MM, Sampaio MR, Noronha AB, Vicente M, Vianna S. 1993. Detection of antiviral and antitumoral fractions of *Chenopodium amaranticolor* leaf extract. *Microbios* 76: 213-221.
- Elbeshehy EF. 2017. Inhibitor activity of different medicinal plants extracts from *Thuja orientalis*, *Nigella sativa* L., *Azadirachta indica* and *Bougainvillea spectabilis* against Zucchini yellow mosaic virus (ZYMV) infecting *Citrus lanatus*. *Biotechnol Biotechnol Equip* 31 (2): 270-279. DOI: 10.1080/13102818.2017.1279572.
- Gal-On A. 2007. Zucchini yellow mosaic virus: Insect transmission and pathogenicity-The tails of two proteins. *Mol Plant Pathol* 8 (2): 139-150. DOI: 10.1111/j.1364-3703.2007.00381.x.
- Hersanti. 2003. Testing the potential of extracts of 37 plant species as agents of inducing systemic resistance of red chili plants to Cucumber mosaic virus. *J Phytopathol Indones* 7: 54-58.
- Jaroszewska BH, Rymelska N, Borodyno N, Pospieszny H. 2013. Biological and molecular characterization of the Polish zucchini yellow mosaic virus isolates. *Acta Sci Polonorum Hortorum Cultus* 12 (2): 75-85.
- Kheder AA, Taqwa M, Sulaiman TM, Ghanem GAM, Tohamy MR. 2017. Biological, serological and molecular characterization of Egyptian zucchini yellow mosaic virus isolate infecting squash plants in Fayoum governorate. *Egypt J Phytopathol* 45 (2): 1-14. DOI: 10.21608/ejp.2017.88570.
- Kone N, Asare-Bediako E, Silue S, Kone D, Koita O, Wulf M, Stephan W. 2017. Influence of planting date on incidence and severity of viral disease on cucurbits under field condition. *Ann Agric Sci* 62 (1): 99-104. DOI: 10.1016/j.aoas.2017.05.005.
- Kurnianingsih L, Damayanti TA. 2012. Lima ekstrak tumbuhan untuk menekan infeksi Bean common mosaic virus pada tanaman kacang panjang. *Jurnal Fitopatologi Indonesia* 8 (6): 155-155. DOI: 10.14692/jfi.8.6.155.
- Lecoq H, Pitrat M, Cle'ment M. 1981. Identification et caracterisation d'un potyvirus provoquant la maladie du rabougrissement jaune du melon. *Agronomie* 1: 827-834. DOI: 10.1051/agro:19811001.
- Lisa V, Boccardo G, D'Agostino G, Dellavalle G, D'Aquilio M. 1981. Characterization of a potyvirus that causes zucchini yellow mosaic. *Phytopathol* 71: 667-672. DOI: 10.1094/Phyto-71-667.
- Maghamnia HR, Hajizadeh M, Azizi A. 2018. Complete genome sequence of zucchini yellow mosaic virus strain Kurdistan, Iran. *3 Biotech* 8 (3): 1-7. DOI: 10.1007/s13205-018-1177-3.
- Maina S, Coutts BA, Edwards OR, Almeida L, Kehoe MA, Ximenes A, Jones RAC. 2017. Zucchini yellow mosaic virus populations from EastTimorese and Northern Australian cucurbit crops: Molecular properties, genetic connectivity, and biosecurity implications. *Plant Dis* 101 (7): 1236-1245. DOI: 10.1094/PDIS-11-16-1672-RE.
- Massumi H, Shaabani M, Heydamejad J, Hosseini Pour AH, Rahimian H. 2011. Host range and phylogenetic analysis of Iranian isolates of zucchini yellow mosaic virus. *J Plant Pathol* 93: 187-193.
- Moradi Z, Mehrvar M, Nazifi E. 2019. Population genetic analysis of zucchini yellow mosaic virus based on the CI gene sequence. *J Cell Mol Res* 10 (2): 76-89. DOI: 10.22067/jcmr.v10i2.76133.
- Nasr-Eldin MA, Hayam S, Abdelkader HS, Abo-Senna AS, Othman BA. 2016. Characterization and phylogenetic analysis of zucchini yellow mosaic virus infecting *Cucurbita pepo* in Egypt. *Am J Sci* 12 (3): 93-104. DOI: 10.7537/marsjas12031613.
- Pandawani NP, Widnyana IK. 2021. Identification of virus causes of mosaic diseases in zucchini plants in the Bali Island of Indonesia. *Tekirdag Ziraat Fakültesi Dergisi* 18 (3): 411-418. DOI: 10.33462/jotaf.707645.
- Prendeville HR, Ye X, Morris J, Pilson D. 2012. Virus infections in wild plants are both frequent and often unapparent. *Am J Bot* 99 (6): 1033-1042. DOI: 10.3732/ajb.1100509.
- Romay G, Lecoq H, Geraud-Pouey F, Chirinos DT, Desbiez C. 2014. Current status of cucurbit viruses in Venezuela and characterization of Venezuelan isolates of zucchini yellow mosaic virus. *Plant Pathol* 63 (1): 78-87. DOI: 10.1111/ppa.12072.
- Simmons HE, Dunham JP, Zinn KE, Munkvold GP, Holmes EC, Stephenson AG. 2013. Zucchini yellow mosaic virus (ZYMV, Potyvirus): Vertical transmission, seed infection and cryptic infections. *Virus Res* 176 (1-2): 259-264. DOI: 10.1016/j.virusres.2013.06.016.
- Simmons HE, Holmes EC, Gildow FE, Bothe-Goralczyk MA, Stephenson AG. 2011. Experimental verification of seed transmission of zucchini yellow mosaic virus. *Plant Dis* 95 (6): 751-754. DOI: 10.1094/PDIS-11-10-0843.
- Spadotti D, Wassano D, Rezende J, Camargo LEA, Inoue-Nagata AK. 2015. Biological and molecular characterization of Brazilian isolates of zucchini yellow mosaic virus. *Sci Agric* 72: 187-191. DOI: 10.1590/0103-9016-2014-0197.
- Tymchyshyn O, Shevchenko T, Shevchenko O, Budzanivska I. 2017. Phylogenetic analysis of seed-transmitted isolate of zucchini yellow mosaic virus. *Bull Taras Shevchenko Natl Univ Kyiv* 2: 47-50. DOI: 10.17721/1728_2748.2017.7446-50.
- Valli AA, Gallo A, Rodamilans B, López-Moya JJ, García JA. 2017. The HCPPro from the Potyviridae family: an enviable multitasking helper component that every virus would like to have. *Mol Plant Pathol* 19 (3): 744-763. DOI: 10.1111/mpp.12553.
- Verma HN, Baranwal VK, Srisavasta S. 1998. Antiviral substances of plant origin. *Plant Virus Dis Control* 539: 154-162.
- Vivanco JM, Querci M, Salazar LF. 1999. Antiviral and antiviral activity of MAP containing extracts from *Mirabilis jalapa* roots. *Plant Dis* 83 (12): 1116-1121. DOI: 10.1094/PDIS.1999.83.12.1116.
- Wang D, Li G. 2017. Biological and molecular characterization of zucchini yellow mosaic virus isolates infecting melon in Xinjiang, China. *Can J Plant Pathol* 39 (1): 48-59. DOI: 10.1080/07060661.2017.1285356.

High impact of Clerodendrum paniculatum leaf extract to suppress zucchini yellow mosaic virus infection in zucchini plants

ORIGINALITY REPORT

17%	12%	13%	3%
SIMILARITY INDEX	INTERNET SOURCES	PUBLICATIONS	STUDENT PAPERS

PRIMARY SOURCES

1	www.agriculturejournals.cz Internet Source	3%
2	text-id.123dok.com Internet Source	2%
3	Submitted to Universitas Jenderal Soedirman Student Paper	2%
4	bsppjournals.onlinelibrary.wiley.com Internet Source	1%
5	"A Century of Plant Virology in India", Springer Science and Business Media LLC, 2017 Publication	1%
6	journal.ipb.ac.id Internet Source	1%
7	Sílvia Cristina Sobottka Rolim Moura, Gabriela Nicoluci Schettini, Darlila Aparecida Gallina, Izabela Dutra Alvim et al. "Microencapsulation of hibiscus bioactives and its application in	1%

yogurt", Journal of Food Processing and Preservation, 2022

Publication

8

Nandlal Choudhary. "Cloning and expression of antiviral/ribosome-inactivating protein from Bougainvillea xbuttiana", Journal of Biosciences, 03/2008

Publication

<1 %

9

dokumen.pub

Internet Source

<1 %

10

Submitted to Township High School District 113

Student Paper

<1 %

11

L Usher, B Sivparsad, A Gubba. " Isolation, identification and molecular characterisation of an isolate of occurring in KwaZulu-Natal, South Africa ", South African Journal of Plant and Soil, 2012

Publication

<1 %

12

Henryk Pospieszny, Natasza Borodynko-Filas, Beata Hasiów-Jaroszewska, Natalia Rymelska, Santiago F. Elena. "Transmission rate of two Polish Tomato torrado virus isolates through tomato seeds", Journal of General Plant Pathology, 2018

Publication

<1 %

- | | | |
|----|--|------|
| 13 | P Renuka Devi, Sabitha Doraiswamy, S Nakkeeran, R Rabindran, T Ganapathy, M Ramiah, S Mathiyazhagan. " Antiviral action of and against tomato spotted wilt virus (TSWV) infecting tomato ", Archives Of Phytopathology And Plant Protection, 2004
Publication | <1 % |
| 14 | sevgiligiyim.com
Internet Source | <1 % |
| 15 | K. Subramanya Sastry, Bikash Mandal, John Hammond, S. W. Scott, R. W. Briddon. "Encyclopedia of Plant Viruses and Viroids", Springer Science and Business Media LLC, 2019
Publication | <1 % |
| 16 | www.ncbi.nlm.nih.gov
Internet Source | <1 % |
| 17 | www.tandfonline.com
Internet Source | <1 % |
| 18 | Anam Saleem, Zahid Ali, Shyi-Dong Yeh, Wajeelha Saeed et al. "Genetic variability and evolutionary dynamics of atypical Papaya ringspot virus infecting Papaya", PLOS ONE, 2021
Publication | <1 % |
| 19 | D Indratmi, Hartawati, C T Noctavia, M D Rachmawan. "Inhibition of orange (Citrus | <1 % |

reticulata) green mold with anti-fungal yeast *Debaryomyces hansenii* and *Aureobasidium pullulans*", IOP Conference Series: Earth and Environmental Science, 2021

Publication

20

J.P. Dunham, H.E. Simmons, E.C. Holmes, A.G. Stephenson. "Analysis of viral (zucchini yellow mosaic virus) genetic diversity during systemic movement through a Cucurbita pepo vine", Virus Research, 2014

Publication

<1 %

21

Maharani Mustika Putri, Tri Asmira Damayanti. "UTILIZATION OF PLANT EXTRACTS TO SUPPRESS Squash Mosaic Virus INFECTION ON RIDGED GOURD (*Luffa acutangula* [L.Roxb])", Jurnal Hama dan Penyakit Tumbuhan Tropika, 2020

Publication

<1 %

22

Wuye Ria Andayanie, Wahidin Nuriana, Netty Ermawati. "ANTIVIRAL ACTIVITY OF CASHEW NUT SHELL EXTRACT AGAINST COWPEA MILD MOTTLE VIRUS ON SOYBEAN", JURNAL HAMA DAN PENYAKIT TUMBUHAN TROPIKA, 2020

Publication

<1 %

23

edocs.maseno.ac.ke

Internet Source

<1 %

24

pdffox.com

Internet Source

<1 %

25	pjbt.org Internet Source	<1 %
26	researchspace.ukzn.ac.za Internet Source	<1 %
27	worldwidescience.org Internet Source	<1 %
28	"Virus Diseases of Ornamental Plants", Springer Science and Business Media LLC, 2021 Publication	<1 %
29	AMIT GAL-ON. "Zucchini yellow mosaic virus: insect transmission and pathogenicity ?the tails of two proteins", Molecular Plant Pathology, 2007 Publication	<1 %
30	Ariella Tvito, Aaron Ronson, Renan Ghosheh, Mira Kharit et al. "Anti-CD20 monoclonal antibodies inhibit seropositive response to Covid-19 vaccination in Non-Hodgkin lymphoma patients within six months after treatment", Experimental Hematology Internet Source	<1 %
31	Lara R. Jaber, Nida' M. Salem. " Endophytic colonisation of squash by the fungal entomopathogen (Ascomycota: Hypocreales) for managing in cucurbits ", Biocontrol Science and Technology, 2014	<1 %

Publication

Exclude quotes	On	Exclude matches	Off
Exclude bibliography	On		